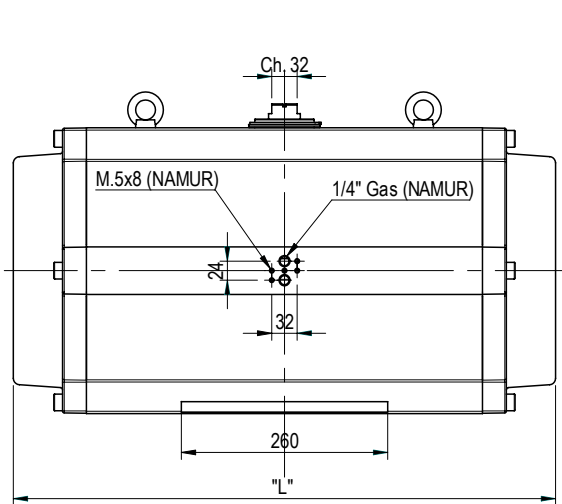
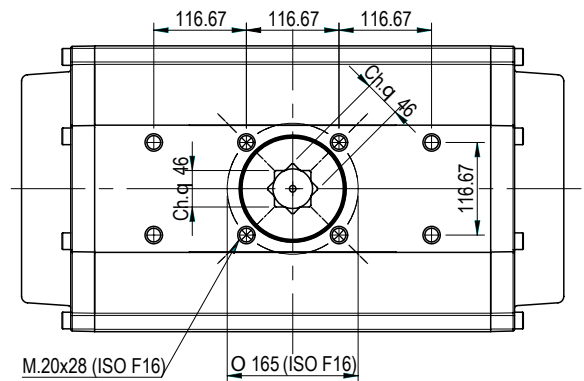
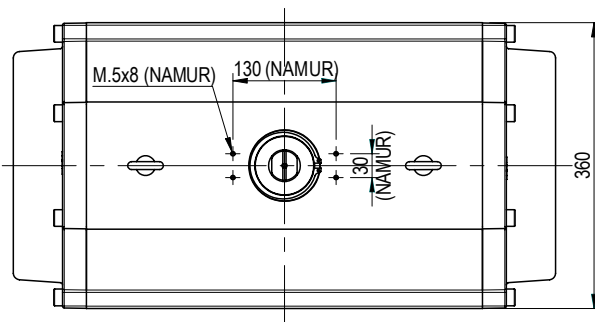
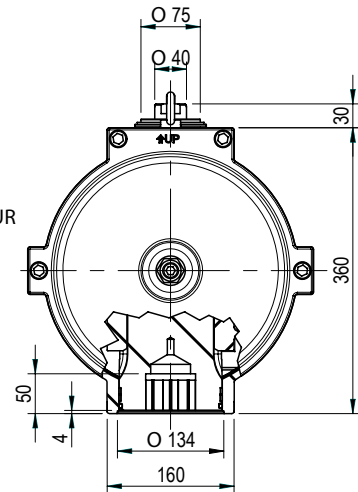


Pneumatischer Antrieb mit beidseitig einstellbaren Endlagen
Pneumatic actuator with double limit stop

GTW.300



Luftanschluss nach NAMUR
NAMUR standard ports



| LÄNGE [mm] LENGHT [mm] | | | LUFTVERBRAUCH [N.lt] AIR CONSUMPTION [N.lt] | | | | GEWICHT (2) [kg] WEIGHT (2) [kg] | | | |
|---------------------------|------|------|--|------|------|---------|-------------------------------------|------|------|---------|
| 90° | 120° | 180° | 90° | 120° | 180° | 90° (1) | 90° | 120° | 180° | 90° (1) |
| 683 | | | 46,0 | | | 25,0 | 92,0 | | | 107,1 |

- (1) Einfachwirkender Antrieb mit 12 Federn
Spring return whit 8 spring cartridges
- (2) Gewichtsangaben für Antriebe mit Ritzelhöhe = 30mm
Weights referred to protrusion shafts 30mm

DREHMOMENT [Nm] - DOPPELTWIRKENDE STELLANTRIEBE / TORQUE [Nm] - DOUBLE ACTING ACTUATORS

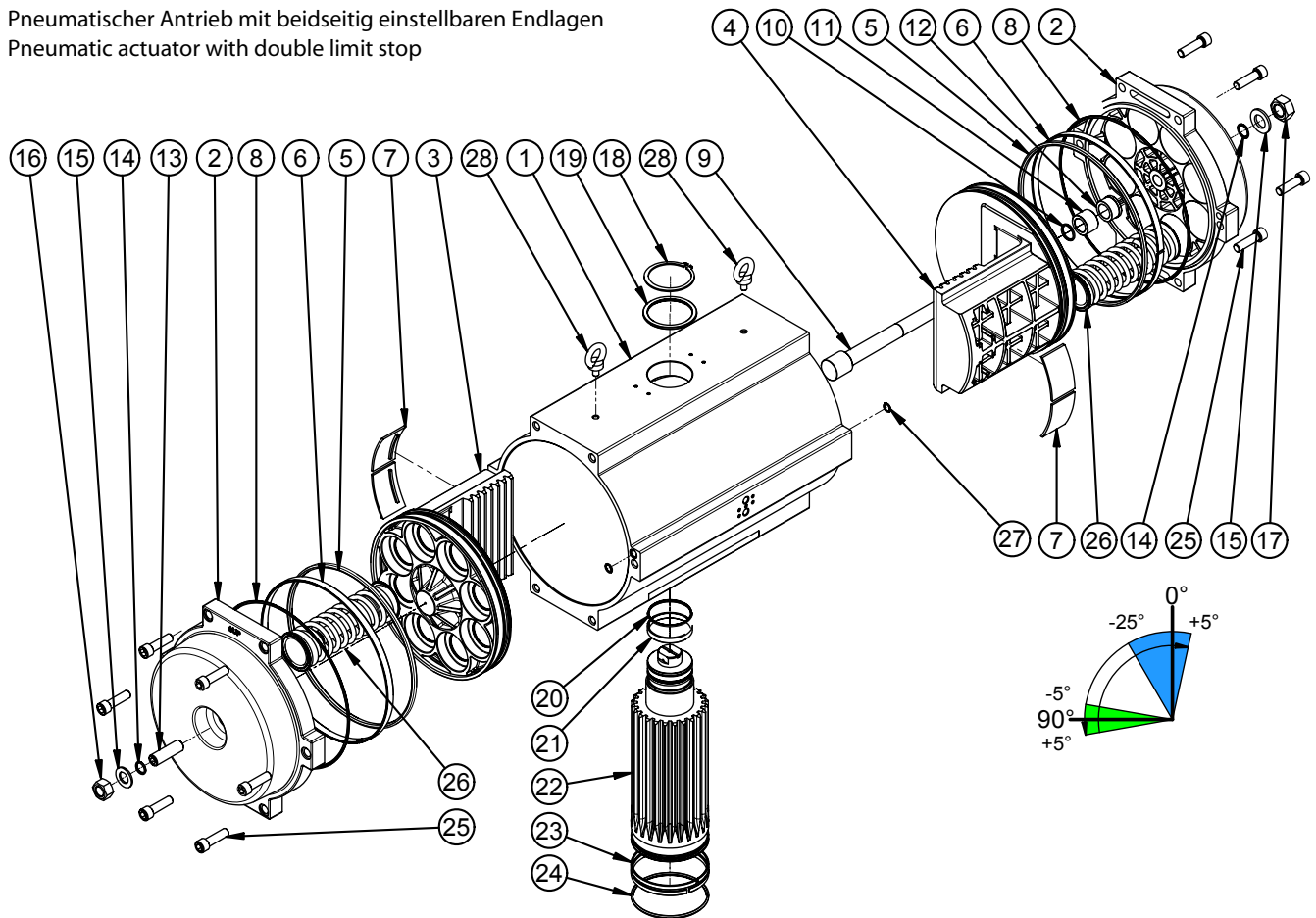
| Pneumatisches Drehmoment [Nm] / Pneumatic torque [Nm] | | | | | | | | | | | | | |
|---|---------|-------|---------|-------|---------|-------|---------|-------|---------|-------|-------|-------|--------|
| 2 bar | 2,5 bar | 3 bar | 3,5 bar | 4 bar | 4,5 bar | 5 bar | 5,6 bar | 6 bar | 6,5 bar | 7 bar | 8 bar | 9 bar | 10 bar |
| 1600 | 2000 | 2400 | 2800 | 3200 | 3600 | 4000 | 4480 | 4800 | 5200 | 5600 | 6400 | 7200 | 8000 |

DREHMOMENT [Nm] - EINFACHWIRKENDE STELLANTRIEBE / TORQUE [Nm] - SINGLE ACTING ACTUATORS

| Federn Springs | Federmoment Spring torque | | Pneumatisches Drehmoment Pneumatic torque | | | | | | | | | | | | | | | | | | | |
|-------------------|------------------------------|------|--|------|-------|------|-------|------|-------|------|--------------------|------|-------------------|------|-------|------|-------|------|--------|------|------|------|
| | 0° | | 2 bar | | 3 bar | | 4 bar | | 5 bar | | 80 PSIG 5,6 bar | | 100 PSIG 7 bar | | 8 bar | | 9 bar | | 10 bar | | | |
| | 0° | 90° | 0° | 90° | 0° | 90° | 0° | 90° | 0° | 90° | 0° | 90° | 0° | 90° | 0° | 90° | 0° | 90° | 0° | 90° | | |
| 1 | 136 | 203 | 1460 | 1391 | 2260 | 2191 | 3060 | 2991 | 3860 | 3791 | 4340 | 4271 | 4660 | 4591 | 5460 | 5391 | 6260 | 6191 | 7060 | 6991 | 7860 | 7791 |
| 2 | 272 | 406 | 1320 | 1182 | 2120 | 1982 | 2920 | 2782 | 3720 | 3582 | 4200 | 4062 | 4520 | 4382 | 5320 | 5182 | 6120 | 5982 | 6920 | 6782 | 7720 | 7582 |
| 3 | 408 | 609 | 1179 | 973 | 1979 | 1773 | 2779 | 2573 | 3579 | 3373 | 4059 | 3853 | 4379 | 4173 | 5179 | 4973 | 5979 | 5773 | 6779 | 6573 | 7579 | 7373 |
| 4 | 544 | 812 | 1039 | 763 | 1839 | 1563 | 2639 | 2363 | 3439 | 3163 | 3919 | 3643 | 4239 | 3963 | 5039 | 4763 | 5839 | 5563 | 6639 | 6363 | 7439 | 7163 |
| 5 | 681 | 1015 | 899 | 554 | 1699 | 1354 | 2499 | 2154 | 3299 | 2954 | 3779 | 3434 | 4099 | 3754 | 4899 | 4554 | 5699 | 5354 | 6499 | 6154 | 7299 | 6954 |
| 6 | 817 | 1218 | 759 | 345 | 1559 | 1145 | 2359 | 1945 | 3159 | 2745 | 3639 | 3225 | 3959 | 3545 | 4759 | 4345 | 5559 | 5145 | 6359 | 5945 | 7159 | 6745 |
| 7 | 953 | 1421 | 619 | 136 | 1419 | 936 | 2219 | 1736 | 3019 | 2536 | 3499 | 3016 | 3819 | 3336 | 4619 | 4236 | 5419 | 4936 | 6219 | 5736 | 7019 | 6536 |
| 8 | 1089 | 1624 | | | 1278 | 727 | 2078 | 1527 | 2878 | 2327 | 3358 | 2807 | 3678 | 3127 | 4479 | 3927 | 5279 | 4727 | 6079 | 5527 | 6879 | 6327 |
| 9 | 1225 | 1827 | | | 1138 | 518 | 1938 | 1318 | 2738 | 2118 | 3218 | 2598 | 3538 | 2918 | 4338 | 3718 | 5138 | 4518 | 5938 | 5318 | 6738 | 6118 |
| 10 | 1361 | 2031 | | | 998 | 309 | 1798 | 1109 | 2598 | 1909 | 3078 | 2389 | 3398 | 2709 | 4198 | 3509 | 4998 | 4309 | 5798 | 5109 | 6598 | 5909 |
| 11 | 1497 | 2234 | | | | | 1658 | 899 | 2458 | 1699 | 2938 | 2179 | 3258 | 2499 | 4058 | 3299 | 4858 | 4099 | 5658 | 4899 | 6458 | 5699 |
| 12 | 1633 | 2437 | | | | | 1518 | 690 | 2318 | 1490 | 2798 | 1970 | 3118 | 2290 | 3918 | 3090 | 4718 | 3890 | 5518 | 4690 | 6318 | 5490 |
| 13 | 1769 | 2640 | | | | | 1378 | 481 | 2178 | 1281 | 2658 | 1761 | 2978 | 2081 | 3778 | 2881 | 4578 | 3681 | 5378 | 4481 | 6178 | 5281 |
| 14 | 1906 | 2843 | | | | | 1237 | 272 | 2037 | 1072 | 2517 | 1552 | 2837 | 1872 | 3637 | 2672 | 4437 | 3472 | 5237 | 4272 | 6037 | 5072 |
| 15 | 2042 | 3046 | | | | | | | 1897 | 863 | 2377 | 1343 | 2697 | 1663 | 3497 | 2463 | 4297 | 3263 | 5097 | 4063 | 5897 | 4863 |
| 16 | 2178 | 3249 | | | | | | | 1757 | 654 | 2237 | 1134 | 2557 | 1454 | 3357 | 2254 | 4157 | 3054 | 4957 | 3854 | 5757 | 4654 |

GTW.300

Pneumatischer Antrieb mit beidseitig einstellbaren Endlagen
Pneumatic actuator with double limit stop



ERSATZTEILLISTE / SPARE PARTS LIST

| Pos. | Beschreibung | Description | Menge Q.ty | Ersatzteilset / Spare parts set | | | | | | | |
|------|---|---|---------------|---------------------------------|-------|-------|-------|-------|-------|-------|--|
| | | | | Set 1,5 | Set 2 | Set 3 | Set 4 | Set 6 | Set 7 | Set 8 | |
| 1 | Gehäuse | Actuator body | 1 | - | - | - | - | - | - | - | |
| 2 | Seitendeckel | Actuator end cap | 2 | 1 | - | - | - | - | - | - | |
| 3 | Kolben ohne Durchgangsbohrung | Blind piston | 1 | - | 1 | - | - | - | - | - | |
| 4 | Kolben mit Durchgangsbohrung | Drilled piston | 1 | - | - | 1 | - | - | - | - | |
| 5 | O-Ring-Kolben | Piston sealing O-Ring | 2 | - | 1 | 1 | - | - | 2 | - | |
| 6 | Führungsring-Kolben | Piston guide ring | 2 | - | 1 | 1 | - | - | - | 2 | |
| 7 | Gleitelement-Kolben | Piston guide skate | 2 | - | 7 | 1 | - | - | - | 2 | |
| 8 | O-Ring-Gehäusedeckel | End cap sealing O-Ring | 2 | 1 | - | - | - | - | 2 | - | |
| 9 | Innere Hubeinstellschraube | Internal travel stop rod | 1 | - | - | - | - | - | - | - | |
| 10 | O-Ring für innere Hubeinstellschraube | Internal travel stop rod sealing O-Ring | 1 | - | - | 1 | - | - | - | - | |
| 11 | Gleithülse für innere Hubeinstellschraube | Internal stop rod guide bush | 1 | - | - | 1 | - | - | - | - | |
| 12 | Scheibe-Hubeinstellschraube-Innen | Rod guide bush stop washer | 1 | - | - | - | - | - | - | - | |
| 13 | Äussere Hubeinstellschraube | External travel stop nut | 1 | - | - | - | - | 1 | - | - | |
| 14 | O-Ring für äussere Hubeinstellschraube | Stop sealing O-Ring | 2 | - | - | - | - | 1 | 2 | - | |
| 15 | O-Ring-Scheibe | O-Ring stop washer | 2 | - | - | - | - | 1 | - | - | |
| 16 | Kontermutter-Hubeinstellschraube aussen | External stop nut | 1 | - | - | - | - | 1 | - | - | |
| 17 | Kontermutter-Hubeinstellschraube innen | Internal stop nut (yellow) | 1 | - | - | - | - | - | - | - | |
| 18 | Seegering | Pinion stop circlips | 1 | - | - | - | 1 | - | - | - | |
| 19 | Anlaufscheibe | Upper pinion washer | 1 | - | - | - | 1 | - | - | - | |
| 20 | O-Ring-Ritzel-oben | Upper pinion O-Ring sealing | 1 | - | - | - | 1 | - | 1 | - | |
| 21 | Führungsring-Ritzel-oben | Upper pinion guide ring | 1 | - | - | - | 1 | - | - | 1 | |
| 22 | Ritzel | Pinion | 1 | - | - | - | 1 | - | - | - | |
| 23 | Führungsring-Ritzel-unten | Lower pinion guide ring | 1 | - | - | - | 1 | - | - | 1 | |
| 24 | O-Ring-Ritzel-unten | Lower pinion O-Ring sealing | 1 | - | - | - | 1 | - | 24 | - | |
| 25 | Schrauben-Seitendeckel | End cap screws | 8 | 4 | - | - | - | - | - | - | |
| 26 | Rückstellfedern | Spring cartridges | 0-12 | - | - | - | - | - | - | - | |
| 27 | O-Ring-Luftkanal | Air supply O-Ring | 2 | - | - | - | - | - | - | - | |
| 28 | Tragösen | Eyebolt | 2 | - | - | - | - | - | - | - | |

Set1,4 = Seitendeckel, komplett / Cap, complete

Set 2 = Kolben ohne Durchgangsbohrung, komplett / Blind piston, complete

Set 3 = Kolben mit Durchgangsbohrung, komplett / Drilled piston kit, complete

Set 4 = Ritzel, komplett / Shaft complete

Set 6 = Innere Hubeinstellschraube, komplett / External stop kit, complete

Set 7 = Dichtungssatz / Seal kit

Set 8 = Verschleißteilsatz / Guide kit