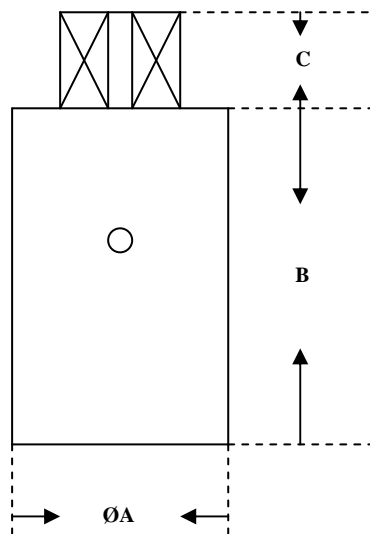


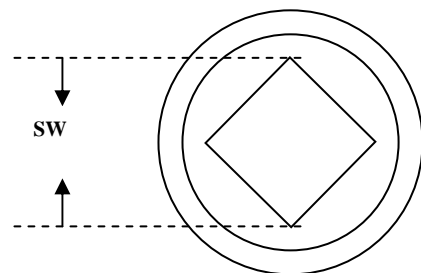
## Wellenadapter Typ WA couplings type WA

Wellenadapter zur Verbindung von Schwenk-  
Antrieben auf Industriearmaturen mit 4-kant an  
Oberseite gemäß ISO 5211 (bzw. DIN 3337).  
Material: Edelstahl 1.4305, mit roter Stellungsanzeige

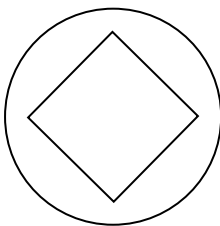
Coupling for connection of actuators on industrial  
Valves with square at coupling top according ISO 5211  
(or DIN 3337), material: 1.4305, with red position indicator



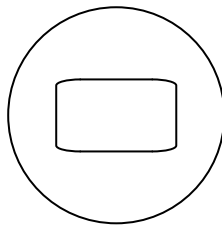
Draufsicht/on top view:



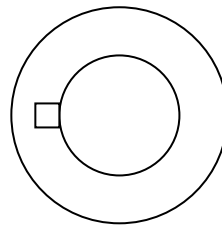
**Bearbeitungsmöglichkeiten Unterseite Wellenadapter:**  
**Possibilities at shaft bottom:**



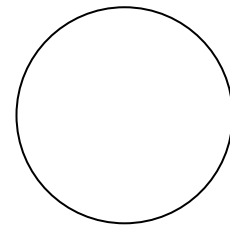
Vierkant  
square



Zweiflach  
double D



Paßfedernut  
key



unbehandelt  
without



Ohne Bearbeitung Unterseite Wellenadapter / without treatment of shaft bottom:

Typ type	Material material	Angaben/dimensions in mm			
		SW	A	B	C
WA.E.9.20	1.4305	9	20		10
WA.E.11.20	1.4305	11	20		12
WA.E.14.30	1.4305	14	30		15
WA.E.17.35	1.4305	17	35		18
WA.E.22.45	1.4305	22	45		24
WA.E.27.50	1.4305	27	50		29
WA.E.36.60	1.4305	36	60		38
WA.E.36.70	1.4305	36	70		38
WA.E.46.70	1.4305	46	70		48
WA.E.46.80	1.4305	46	80		48
WA.E.46.90	1.4305	46	90		48
WA.E.55.70	1.4305	55	70		57
WA.E.55.80	1.4305	55	80		57
WA.E.55.90	1.4305	55	90		57

Mit Vierkant oder Zweiflach Unterseite Wellenadapter / with square or double d at shaft bottom (= xx = gemäß Kundenangabe / according customer info):

Typ type	Material material	Angaben/dimensions in mm			
		SW	A	B	C
WA.E.9.20.xx	1.4305	9	20		10
WA.E.11.20.xx	1.4305	11	20		12
WA.E.14.30.xx	1.4305	14	30		15
WA.E.17.35.xx	1.4305	17	35		18
WA.E.22.45.xx	1.4305	22	45		24
WA.E.27.50.xx	1.4305	27	50		29
WA.E.36.60.xx	1.4305	36	60		38
WA.E.36.70.xx	1.4305	36	70		38
WA.E.46.70.xx	1.4305	46	70		48
WA.E.46.80.xx	1.4305	46	80		48
WA.E.46.90.xx	1.4305	46	90		48
WA.E.55.70.xx	1.4305	55	70		57
WA.E.55.80.xx	1.4305	55	80		57
WA.E.55.90.xx	1.4305	55	90		57